

# TECHNOTE 1502

## ISSUED

September 2015

## SUBJECT

Release of MCEGold® 2.6.2 SP6.

## DESCRIPTION

The MCEGold 2.6.2 SP6 release contains minor enhancements and fixes several bugs.

MCEGold 2.6.2 SP6 is available on M and H series testers only.

## MCEGOLD 2.6.2 SP6 INSTALLATION

### Note:

- If you have a Microsoft Windows XP operating system, contact PdMA Tech Support (813-621-6463 ext. 251) prior to the 2.6.2 SP6 installation.

- If you have MCEGold prior to 2.4, contact PdMA Tech Support (813-621-6463 ext. 251) prior to the 2.6.2 SP6 installation.

- If using MCEGold 2.5.1 SP2 or earlier a full uninstall of MCEGold is required. If using MCEGold 2.6.1 or MCEGold 2.6.2 the uninstall is not required; go to MCEGold 2.6.1 Update on page 4.

- MCEGold 2.6.2 SP6 is not compatible with testers requiring a Data Acquisition Card (DAQ).

- For Stand Alone and Field Testers, installing MCEGold 2.6.2 SP6 will require an upgrade of the Microsoft SQL Server 2005 to SQL Server 2008, if not already completed. This does not apply to Servers on a Network.

- To ensure application accessibility, the new default installation location has been set to C:\PdMA Corporation.

- Databases attached to MCEGold 2.6.2 SP6 must be from MCEGold 2.4 or later and once updated with 2.6.2 SP6 *will not* be compatible with older versions of MCEGold.

- Assets opened with MCEGold 2.6.2 SP6 *will not* be compatible with older versions of MCEGold.

### Minimum Requirements:

Computer	Dell Latitude E6430 Laptop*
Processor	2+ GHz Intel i5 or equivalent
Resolution	1600 x 900
Operating System	Microsoft® Windows 7 SP1 32-or 64 bit**
Memory	2.0+ G RAM
Ports/Drives	(2) USB Ports in Rear or Side (M-Series tester has (1) USB Port)
Drives	24x CD-RW + DVD Drive
Hard Disk	20G Available

\* Using any other computer manufacturer in conjunction with the PdMA software may result in erratic computer behavior; not limited to but including:

- Power Management Issues
- Lock-up
- Communication Port Malfunction
- Driver Incompatibility
- Display Errors
- SQL Database Incompatibility
- Network Synchronization Issues.

\*\* For International Customers: Windows 7 Ultimate 32 or 64-bit.

## Server Database Update for Network Users

**Note:** Ensure the user account used to update the server has “sysadmin” permissions.

There is a separate application on the Installation Disc to update the network database on the server. ***The database must be updated on the server first, then the desktops and field testers.***

If the update is installed on a network field tester before the server database is updated, a warning message

appears informing you the database is an old version and to contact your system administrator.

1. Back up the MCEGold database.
2. Insert the disc into the drive. If the disc starts automatically, click **Exit** and proceed to the next step.
3. Locate the MCEGold Database Server Update folder on the MCEGold 2.6.2 SP6 Disc.
4. Click on the MCEGold Database Server Update.exe file.
5. The Server Information window opens. Fill in the Server, Database, Login, and Password information.
6. Click **Run Update**. The progress status will display on the window.
7. When the update complete message displays, close the window.

## Stand Alone Users/Field Tester

**Note:** MCEGold 2.6.2 SP6 requires an upgrade of the Microsoft SQL Server 2005 to SQL Server 2008. Therefore, any stand alone database opened will be updated to SQL Server 2008 and will no longer open on another machine running an older version of MCEGold using SQL Server 2005.

### **MCEGold Prior to 2.4 or Windows XP**

If you are updating from an MCEGold version older than 2.4 or Microsoft Windows XP operating system you must first call PdMA Tech Support (813-621-6463 ext. 251).

### **MCEGold 2.4 or 2.5.1**

From your Control Panel/Program and Features, verify which version of Microsoft SQL Server is installed on your computer.

If Microsoft SQL Server 2005 exists on your computer proceed to the *Uninstall SQL Server 2005* section followed by the *Uninstall MCEGold* section below. There are several components that begin with Microsoft SQL Server 2005, they should all be removed EXCEPT Microsoft SQL Server 2005 Compact Edition (ENU).

If Microsoft SQL Server 2008 and possibly Microsoft SQL Server 2005 Compact Edition (ENU) exists on your computer do not uninstall them. Go to the section *Uninstall MCEGold*.

### **Uninstall SQL Server 2005**

1. Select Start, Control Panel, and click the Programs and Features icon.
2. In the Uninstall or change a program window scroll down to locate and select Microsoft SQL Server 2005 from the list.
3. Click **Uninstall** - located above the list and follow the on screen instructions.
4. Click **Finish** when the “Uninstall Complete” message is received. Do not close the window.
5. Repeat from step 2 uninstalling all components that begin with Microsoft SQL Server 2005. DO NOT uninstall Microsoft SQL Server 2005 Compact Edition (ENU).
6. Close the Uninstall or change a program window when all components have been uninstalled.
7. Reboot the computer.

### **Uninstall MCEGold**

#### **Backup**

Before beginning the MCEGold uninstall, copy the MCECal.xml and Emaxprb.xml files and complete Templates folder to a safe location and make note of the location.

The default location for the files is listed below, however you may have chosen a different location during the original installation.

C:\Program Files\PdMA Corporation\MCEGold\Mce  
C:\Program Files\PdMA Corporation\MCEGold\Emax  
C:\Program Files\PdMA Corporation\MCEGold\Report

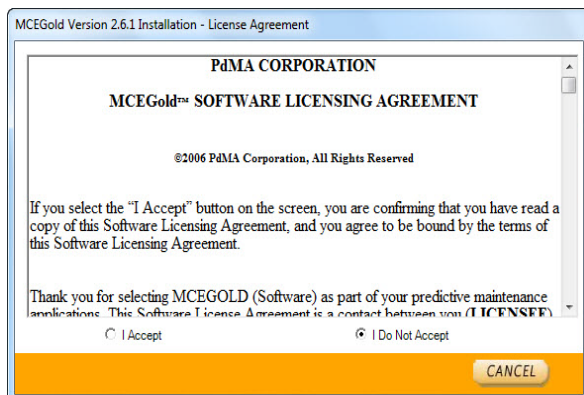
1. Select Start, Control Panel, click on the Programs and Features icon.
2. In the Uninstall or change a program window scroll down to locate and select the MCEGold version from the list.
3. Click **Uninstall** located above the list and follow on screen prompts.

4. Click **Finish** when the “Uninstall Complete” message is received.
5. Locate the PdMA MCEMAX® Tester (Driver Removal) file and click **Uninstall** located above the list and follow the on screen prompts.
6. Click **Finish** when the “Uninstall Complete” message is received.
7. Locate the C:\ProgramFiles\PdMACorporation\ folder and delete it. The subfolders will be deleted also. After the installation of MCEGold 2.6.2 SP6 the new folder location will be C:\PdMA Corporation\....
8. Go to step one in the *Install - MCEGold 2.6.2 SP6* section.

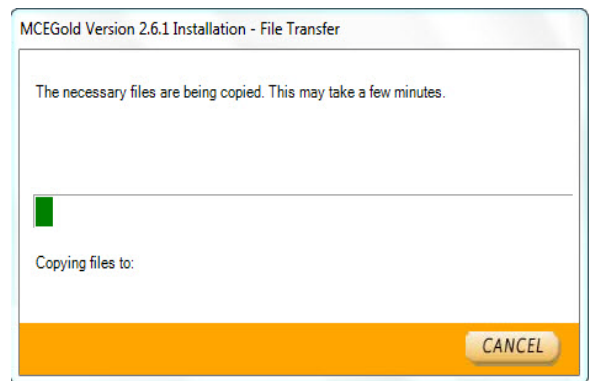
### Install MCEGold 2.6.2 SP6

Note: If you have MCEGold 2.6.1 go to MCEGold 2.6.1 Update on the next page.

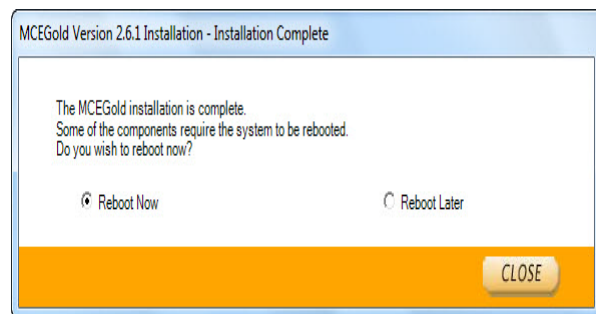
1. Insert the MCEGold 2.6.2 SP6 disc into the drive. If the installation does not begin automatically, run Setup.exe from the disc. (Select Run setup.exe from the AutoPlay window).
2. The License Agreement window opens. Read the PdMA license and select the “I Accept” option button. The **Next** button becomes visible. Click **Next**.  
 Note: If you do not accept the terms, the **Next** button is not visible, you can only click **Cancel**, which closes the software.



3. In the License Key window enter your Company Name and License Key exactly as provided by PdMA. It is not case sensitive. The License Key is **NOT** the same as the Module Activation Key, which activates various modules.
4. Click **Submit** (located to the right of the Company Name space). After the license has been verified the **Next** button appears. Click **Next**.
5. In the Installation Path window, accept the default shown in the textbox (recommended) for the location to install the MCEGold program folder or using the drop-down list select a alternate location, make a note of it for future use, and click **Next**.
6. When prompted, click **Install Components**.
7. When the installation of components is complete the **Next** button appears. Click **Next**.
8. A progress bar shows the progress of copying files to your computer.



9. When the installation is complete you must reboot your system. Select the Reboot Now option and click **Close**.



After rebooting, locate and copy the backup MCECal.xml and Emaxprb.xml files and the Template folder back into their appropriate locations in

- C:\PdMA Corporation\MCEGold\Mce
- C:\PdMA Corporation\MCEGold\Emax
- C:\PdMA Corporation\MCEGold\Report

10. Answer Yes to the “OK to overwrite existing folder” inquiry.
11. Remove the MCEGold 2.6.2 SP6 Disc and reboot the computer.

### **MCEGold 2.6.1 Update**

#### **Install MCEGold 2.6.2 SP6**

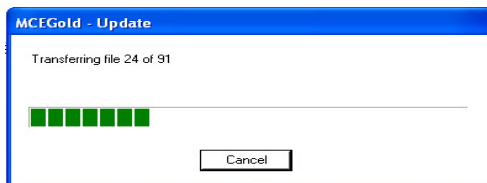
1. Insert the MCEGold 2.6.2 SP6 disc into the drive. It will auto-start to the InstallShield program. However, if does not begin automatically, run Setup.exe from the disc. (Select Run setup.exe from the AutoPlay window).
2. The Installation Update Window opens.



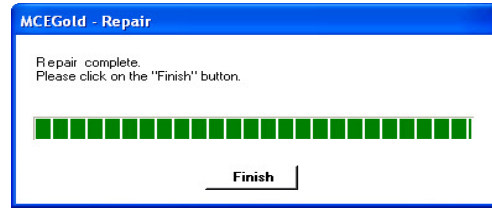
3. Select **Update**.

Note: Selecting **Uninstall** removes the existing MCEGold software from your system. Uninstalling is not necessary for this update.

4. The MCEGold Update window opens and displays a progress bar.



5. Click **Finish** when the update or repair complete message is received.



6. It may be necessary to restart your computer to finalize the installation.